

# SUSPENSION MAXX

## ADVANCED LEVELING SYSTEMS

### MAXXSTAK TOYOTA INSTALLATION INSTRUCTIONS

**Thank You** for choosing SuspensionMAXX for your vehicle. This kit is designed to add suspension travel and increase front ground clearance. Specially designed tools and experience are required to complete the installation properly. These parts should only be installed by a qualified technician, otherwise an unsafe vehicle and/ or personal injury may result. Consult manufactures service manual for proper torque specifications and procedures. Instructions are supplied for the leveling kit installation only. Safety is most important. Exercise safe working habits. This kit is designed to add suspension travel and increase front ground clearance. SuspensionMaxx kits are designed to be easily installed and completely reversible to the factory supplied settings.

#### Tools required for installation:

1. Load rated floor jack 2 safety stands and wheel chocks
2. Metric tool socket set
3. Medium size pry bar, brass drift bar, hammer, hack saw, file
4. Torque wrench

#### Installation procedure

1. Place vehicle on solid level surface set parking brake block rear wheels.
  2. Jack vehicle under frame and secure with load rated jack stands.
  3. Mark wheel lug location. Remove front wheels.
  4. Remove both lower strut mounting thru bolts.
  5. Pry strut inward at bottom, off of the lower control arm.
  6. Lift wire retainer from strut stud if equipped.
  7. Loosen 3 upper strut mounting nuts.
  8. Use CAUTION when removing upper strut mounting nuts.
- Notice:** Strut may fall and damage Steering and CV axle boots if not supported! Gently lower strut assembly and guide it up and out between upper A arm.
9. Mark alignment of strut top and lower mount for future reference (Strut top has offset stud placement)
  10. Choose lift amount by adding black spacer shims to kit as needed. MAXXSTAK = 2.0" + 1 SHIM = 2.25". MAXXSTAK + 2 SHIMS = 2.5"
  11. Place MAXX Stak Advanced Leveling Kit spacer on upper strut mount over mounting studs. Tighten nuts, mark original stud length and trim as needed (MUST BE FLAT WITH MAXX STAK)
  12. Reinstall strut in vehicle aligning studs with top frame mount start top nuts supplied with kit. Rotate strut as needed to align with frame mount.
  13. Align lower strut on top of lower A-Arm, disconnecting upper ball joint may aid in reassembly. Support Lower Arm with floor jack. Use caution not to over extend CV boots (Extra force may be needed to get strut up and on A-Arm due to extended strut length assist use of pry bar) align mounting holes tighten lower bolts
  14. Tighten upper strut nuts.



**Part # SMX - TC5**  
**2005 - 2013 Tacoma**



Lift Your **Attitude!**  
Retain your factory ride



Questions? E-mail us at [tech@SuspensionMAXX.com](mailto:tech@SuspensionMAXX.com)  
Or call 1.888.MAXX.CAM. Visit us on the web at [SuspensionMAXX.com](http://SuspensionMAXX.com)

Again, thank you for your purchase! Enjoy your SuspensionMAXX leveling system!



# SUSPENSION MAXX

## ADVANCED LEVELING SYSTEMS

*Tip:* The following procedure applies to both the left and right side and can be approached with either side first.

15. Support the front differential with floor jack.
16. Remove differential support arm bolt.
17. Insert supplied 16mm aluminum spacer and new bolt. (See Fig. 2)
18. Repeat on other side.
19. See Fig.3 to assure correct installation of spacer.
20. Install skid plate spacers as shown in Fig. 4.
21. Reinstall front wheels. Torque to factory spec.
22. Perform front wheel alignment to maximize performance. Thank you for choosing **Suspension MAXX!**

### Wheel Alignment Specs w/ Leveling Kit

**Camber... 0.0 Deg. +/- 0.5 Deg.**  
**Caster..... 2.0 Deg. +/- 1.0 Deg.**  
**Toe..... 1/8" +/- 1/16" (toe in)**



Fig. 2

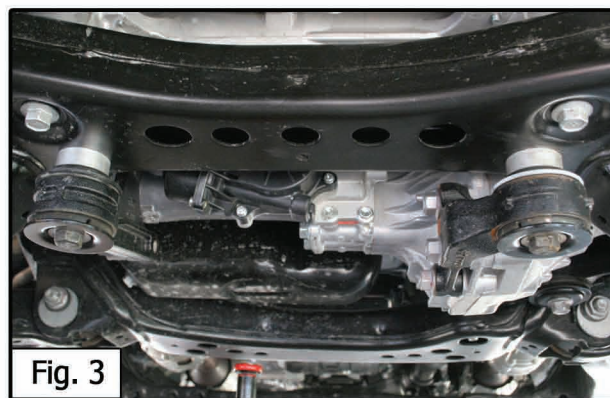


Fig. 3

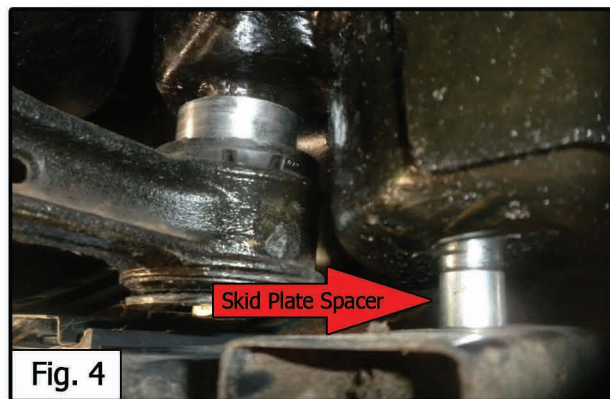


Fig. 4

