

Proudly made in the USA

# Suspension MAXX

## INSTALLATION INSTRUCTIONS

Part # SMX-MC-JRH

For use with:

HUMMER H3 ALL BODY STYLES



Thank You for choosing SuspensionMAXX for your vehicle. This kit is designed to add suspension travel and increase front ground clearance. Specially designed tools and experience are required to complete the installation properly. These parts should only be installed by a Qualified Mechanic otherwise an unsafe vehicle and/ or personal injury may result. Consult manufactures service manual for proper torque specifications and procedures. Instructions are supplied for the leveling kit installation only. Safety is most important. Use safe working habits.

### Notice:

This product combines with the torsion bar to increase suspension height up to 2.5" for a smoother ride. Enhances ride profile and is an economical alternative to expensive lift kits! This kit allows for up to 33" tires.

**WARNING!** This suspension system will enhance off road performance and increase ground clearance! **Larger** tires will increase vehicle roll center height. The vehicle will handle and respond to driver steering and braking differently from a stock factory equipped passenger car or truck. Extreme care must be used to prevent loss of control or vehicle rollover during abrupt maneuvers both on and off-road. Failure to operate this vehicle safely can result in vehicle damage, serious injury or death to the driver and passengers. **Always wear** your seat belts and **reduce** your speed, **avoid** sharp turns, **inclines** and **abrupt** maneuvers. Tread lightly, respect nature and enjoy the Off-Road Experience!

Help keep it available for future generations.

Thank You! Suspension MAXX Inc.

Lift Your **Attitude!**  
Retain your factory ride



Again, thank you for your purchase! Enjoy your SuspensionMAXX leveling system!

Questions? E-mail us at [tech@suspensionmaxx.com](mailto:tech@suspensionmaxx.com) or call 1.888.MAXX.CAM





Proudly made in the USA

# Suspension MAXX

1.



This kit is designed to add adjustability to the factory supplied system to compensate for torsion bar sag and fatigue.

\*Torsion Bar tool not required

Maxxcams are designed to add additional height adjustment to your vehicle. Under no circumstances should the truck be adjusted beyond the factory height measurement.

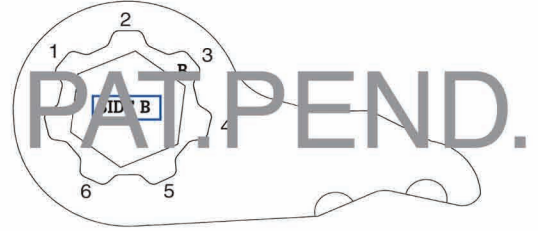
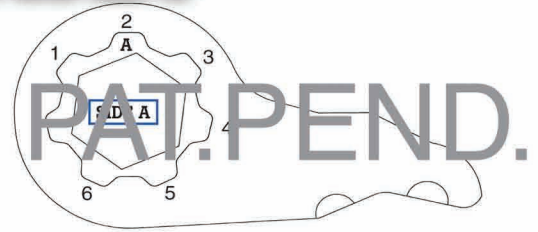
The shock absorber is the suspension height limiter and only stock length shock absorbers are recommended without modification whatsoever.

Adjusting vehicle suspension height beyond the maximum factory height can cause binding of crucial steering and suspension components.

These instructions and warnings shall not be substituted for the factory service Manual. Torsion bars are preloaded in the vehicle. Only Experienced suspension technicians with a working knowledge of the system and the properly designed tools and SAFETY EQUIPMENT should attempt installation of this part.

Installation of this product and all the adjustments should be performed by a licensed certified technician. Using the correct tools and procedures. Adjusting the suspension beyond the factory recommended maximum height can cause binding and accelerated wear of critical steering and suspension parts. Under no circumstances shall Suspension Maxx held liable for any damage or loss of use due to incorrect installation of adjustment. Purchaser of this product assumes all liability.

**Lift Your Attitude!**  
Retain your factory ride



- To calibrate match A or B stamped on the internal hub with the appropriate numbered outer position.
- Apply Anti-seize on gear tooth area to ease future disassembly.
- Install hub alignment clip. (Only 1 supplied)
- Reinstall MAXXCAM JR. in vehicle.
- Remove hub alignment clip. (Discard not required)
- Adjust suspension ride height within specified range.
- Install shock absorber sleeve for positive calibration only!

Actual measurements may vary due to initial starting position, load and bar fatigue.

### HUMMER H3 (ALL BODY STYLES)

<u>Lower</u>	<u>Raise</u>
-2.0in. A5	+0.75in. B7
-1.2in. B6	+1.5in. A7
-0.5in. A6	+2.0in. B1

\*Set ride height measured from the center of the front axle to the fender to 23.5".

Record position for reference

Right \_\_\_\_\_ Left \_\_\_\_\_

Installed \_\_\_\_\_ Mileage \_\_\_\_\_

This kit adds suspension travel only and will not add load carrying capacity to the suspension system.

**\*DO NOT OVERLOAD\***

This kit can be over calibrated. Over adjustment of the torsion bar is not recommended!

NOTICE ALL POSITIONS MAY NOT BE USED IN SOME APPLICATIONS

**Notice...Wheel Alignment Required.**



Again, thank you for your purchase! Enjoy your SuspensionMAXX leveling system!

Questions? E-mail us at [tech@suspensionmaxx.com](mailto:tech@suspensionmaxx.com) | or call 1.888.MAXX.CAM



Proudly made in the USA

# Suspension MAXX



**PROPERLY DESIGNED TOOLS REQUIRED!**

**REMOVAL**

1. Raise and safely support vehicle under certified frame lift points. Remove tire and wheel assembly.
2. Remove tension on torsion bar by rotating bolt in counter-clockwise direction. Remove height adjusting bolt and horizontal adjusting nut when fully unloaded. *See Fig 2.2*
3. Raise torsion bar lever rearward and remove from torsion bar hex.

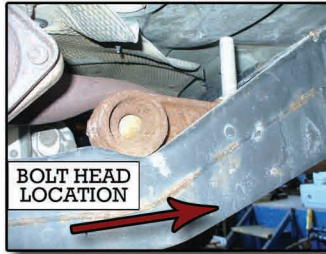
**CAUTION DISENGAGED LEVEL CAN FALL FROM VEHICLE AND CAUSE INJURY.** (Notice torsion bar may be frozen in lever, added force may be required for disassembly).

**INSTALLATION**

4. Inspect torsion bars, crossmember support for bends, cracks, rust or damage. Check adjusting bolts and nuts for damage, rust or stripped threads. Replace as necessary.
5. Calibrate MAXXCAM JR. as needed to compensate for torsion bar sag and fatigue. **See CALABRATION INSTRUCTIONS.**
6. Install MAXXCAM JR. on torsion bar, fully engaging torsion bar HEX in MAXXCAM JR. *See Fig 2.6*
7. Reinstall adjusting bolt and horizontal nut, fully engaging threads. Rotate clockwise to increase tension.

**NOTICE: INCREASED PRESSURE REQUIRED! USE EXTREME CAUTION!**

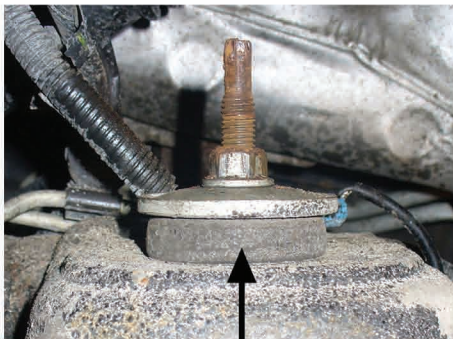
**Fig 2.2**



**Fig 2.6**



**\*Check and adjust ride height and wheel alignment. Over adjustment of torsion bars not recommended**



**Stock Shock Mount**

**Shock Absorber Kit**



**A. Remove nut, washer, and center sleeve shown above**



**B. Assemble above parts in order shown**



**Kit Installed**

**Again, thank you for your purchase! Enjoy your SuspensionMAXX leveling system!**

**Questions? E-mail us at [tech@suspensionmaxx.com](mailto:tech@suspensionmaxx.com) | or call 1.888.MAXX.CAM**



Proudly made in the USA

# Suspension MAXX



## DRIVE LINE CORRECTION SPACER KIT (FIG 3.1)

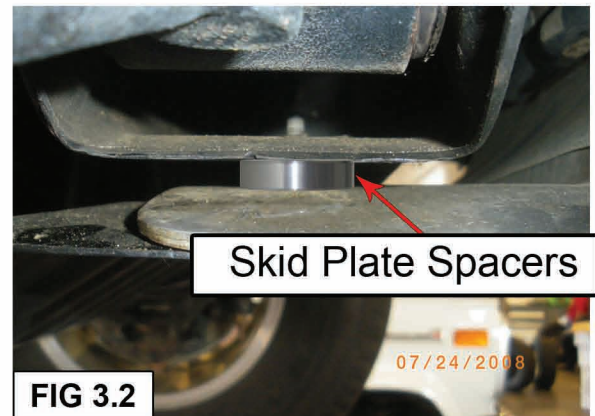
1. Support front differential drive case with suitable jack or stand.
2. Loosen two mounting bolts and remove one at a time.
3. Slowly lower front differential case allowing room for spacers.
4. Install one spacer per bolt locaton. Reuse factory bolts. Torque all fasteners. (Use 2 spacers of larger thickness)

## SKID PLATE SPACERS

1. Remove skid plate mounting bolts.
2. Insert 2 skid plate spacers as shown (Smaller Thickness Aluminum Spacers) See Fig 3.2
3. Reattach differential skid plate and front skid plate.

### Wheel Alignment Specs w/ Leveling Kit

Camber... 0.0 Deg. +/- 0.5 Deg.  
Caster.... 2.0 Deg. +/- 1.0 Deg.  
Toe..... 1/8" +/- 1/16" (toe in)



## IMPORTANT WARRANTY INFORMATION

At Suspension Maxx it is our goal to provide our customers with the highest quality parts available to provide years of enjoyment and trouble free service. Therefore, each Suspension Maxx product is guaranteed to be free from structural defects and is backed by a 100% Limited Lifetime Replacement Warranty wherein such defects may be found to be responsible for any product failure. This warranty excludes normal wear items such as bushings, hardware, and/or specialty components, as well as those items found to be used in a manner other than intended by the manufacturer. Customers will assume applicable shipping and handling charges for warranty replacement. We thank you for your purchase and support of American-made Suspension Maxx quality components!

Again, thank you for your purchase! Enjoy your SuspensionMAXX leveling system!

Questions? E-mail us at [tech@suspensionmaxx.com](mailto:tech@suspensionmaxx.com) | or call 1.888.MAXX.CAM