



INSTALLATION INSTRUCTIONS

PART#: SMX-1229

FITS: DODGE

•2003-17 2500/3500 2WD RAM (COIL-ON CONTROL ARM + IFS)

Please read all instructions prior to starting installation.

The enclosed suspension components are designed to replace worn, non-serviceable parts on the vehicle they were intended to fit. Inspect for evidence of unseated taper repair or replace as needed.

CAUTION

Proper service and repair procedures are necessary for the safe installation of chassis parts. Specially designed tools and required experience are needed to complete the installation properly. These parts should only be installed by a qualified technician; otherwise an unsafe vehicle and/or personal injury may result. Consult manufacturer's service manual for proper torque specifications and procedures.

WARNING!

Inspect vehicle and related components for excessive wear, damage, rust and corrosion. Attaching locations need to be free of rust or contamination. All fasteners replaced during the repair procedure must meet vehicle manufacturer's specifications.



INSTRUCTIONS

SuspensionMAXX kits are designed to be easily installed and completely reversible to the factory supplied settings. These instructions are supplied for ease of installation, correct procedures and safety. Automotive experience recommended.

REQUIRED TOOLS

- 9/16" Combination wrench
- Adjustable Wrench
- 9/16" Socket
- 19mm Socket
- Ratchet

SECTION 1

1. Unbolt factory sway bar link from lower control arm.
2. Unbolt stabilizer bar from end link
3. Insert MAXXLink through lower control arm with the open end side facing outward towards the wheel and hub assembly.

NOTICE: The proper alignment of the sway bar end link is important for proper articulation of the end-link. Link position should appear similar to **FIG 1-3 & 1-4** when viewed from the front of the vehicle.

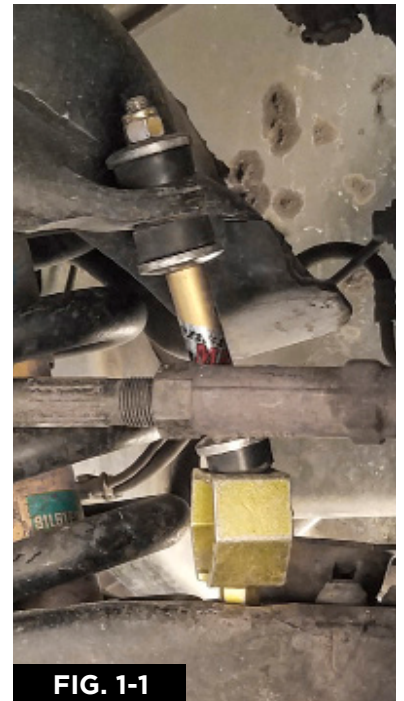
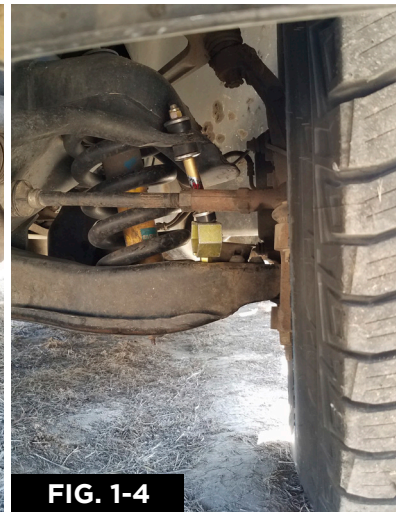


FIG. 1-1

Again, Thank you for your purchase! Enjoy your SuspensionMAXX leveling system!

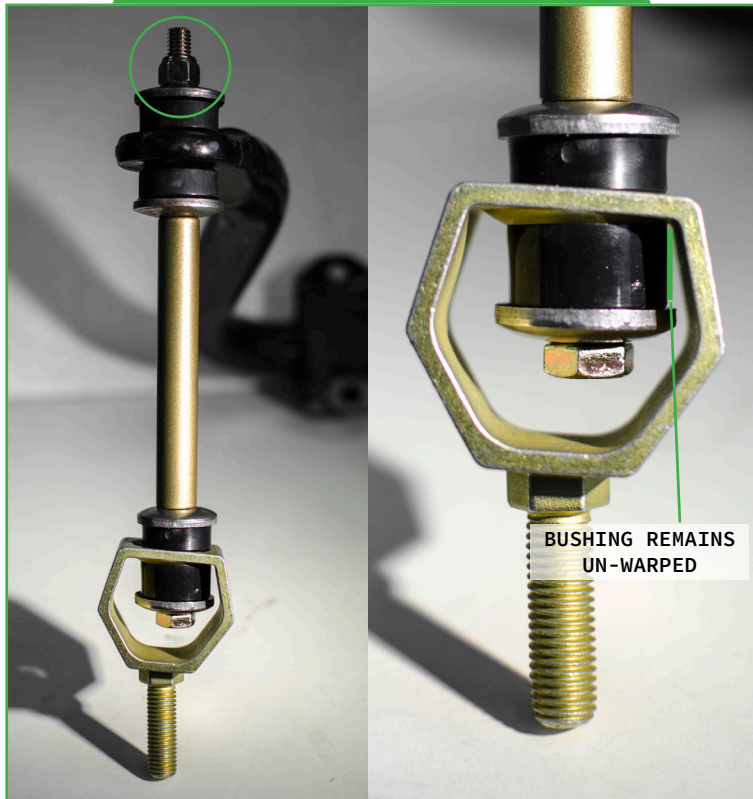
Questions? E-mail us at tech@suspensionmaxx.com or call 1.888.629.9226

4. Install supplied lock washer and start retaining nut. Continue on opposing side. Install upper sway bar bushing, washer and nut. Tighten to lightly compress bushings (tighten so approximately 1/4" - 3/8" threads exposed) See Recommended Compression Guide. View **MAXXLink** and rotate as needed to center lower concave /convex bushings. Hold **MAXXLink** in place and torque retaining nut to 60 ft/lbs. See **FIG 1-2**

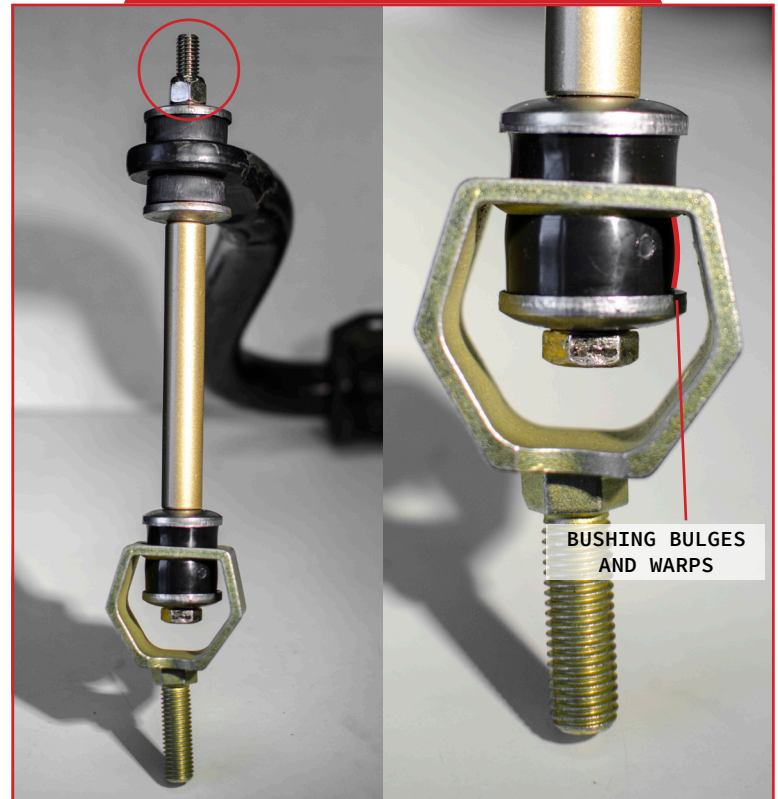


RECOMMENDED COMPRESSION GUIDE

OPTIMAL COMPRESSION



OVER COMPRESSION



NOTE: Tighten to lightly compress bushings (tighten so approximately 1/4" - 3/8" threads exposed)

Again, Thank you for your purchase! Enjoy your SuspensionMAXX leveling system!
Questions? E-mail us at tech@suspensionmaxx.com or call 1.888.629.9226